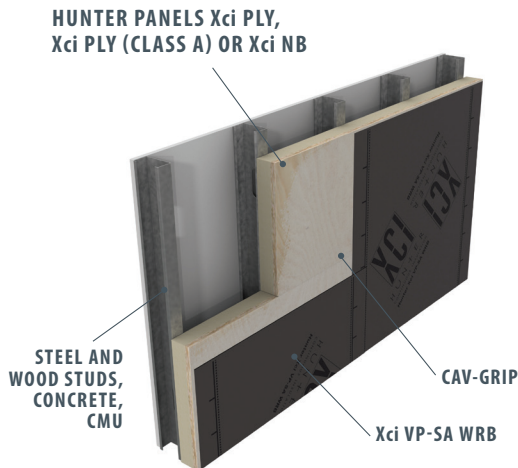


Understanding the Hunter Xci AEGIS Wall System™

Put the complete Hunter Xci AEGIS System to work for you. Hunter Panels has you covered with a single-source solution of products designed to make your next project come together simply and efficiently. As a leading Innovator of polyiso products, we know what it takes to help you build with confidence.

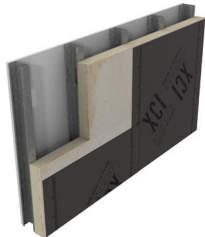


Hunter Xci AEGIS Wall System Features and Benefits

- Thinner, energy-efficient, code-compliant walls allow for more usable square footage.
- Single source solution provides peace of mind surrounding air, water, and thermal protection.
- Multi-functionality of materials reduces number of trips around the building minimizing installation costs.
- Simplified installation for wall assembly: cladding attaches into OSB or plywood substrate directly over barrier material.
- Systemization ensures compatibility of materials performing key functions within the wall assembly.

The Hunter Xci AEGIS System

Components



Hunter Xci Ply and Xci Ply (Class A)

Xci Ply is an energy efficient rigid insulation panel composed of a closed cell polyiso foam core bonded to a premium performance coated glass facer on one side and 5-ply fire treated plywood on the other.

Xci Ply is ideal for rapid envelope installation. It has been tested within a wide assortment of NFPA 285 compliant assemblies for use in Types I, II, III, and IV buildings. Xci Ply (Class A) is made with <25 flame spread foam core polyiso.



Hunter Xci NB

Xci NB is an energy efficient rigid insulation panel composed of a closed cell polyisocyanurate foam core bonded to a premium performance coated glass facer on one side and OSB or standard plywood on the other.

Xci NB offers a simple solution for continuous insulation and cladding attachment in Type V construction.



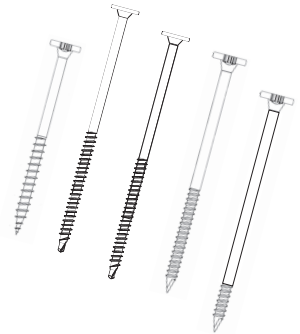
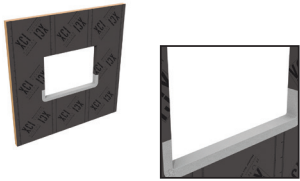
Xci VP-SA WRB

A vapor permeable, self adhering weather resistive barrier designed for use in above grade wall assemblies. It provides protection against air and water intrusion while still allowing for breathability. The dark gray color minimizes visibility in open-joint cladding applications.

Hunter Panels • 15 Franklin St, Portland, Maine 04101
888.746.1114 • Fax 877.775.1769 • hunterpanels.com



HUNTER
CONTINUOUS INSULATION



Technical Information

NTA Report (Fastening Information)

Your guide to attaching Hunter Xci wood composite panels to the structural base wall (wood or steel framing, concrete, CMU) in order to support the cladding system.

TER 1508-01 Structural Applications

This technical evaluation report certifies the shear wall performance of Hunter Panels Xci NB, Xci Ply and Xci Ply (Class A) in certain wood stud applications.

Accessories

Detail Flashing

- Xci FlexShield™: self-adhering flexible flashing membrane for window sills
- Xci VP-SA WRB: slit rolls available for detail areas
- Xci Aluma-Grip 701: foil-faced butyl flashing tape

Primer or Contact Adhesive

- CAV-GRIP
- CAV-GRIP Accessories: hoses, spray nozzles, cleaner

SIP SD/SIP SD-PT

Fastener for installing Xci Ply and NB products into 18–22 gauge steel stud, concrete or CMU walls. SIP/SD-PT is a partial thread fastener for use in particular applications to prevent panel jacking. Pre-drilling is required for concrete and CMU applications.

SIP HD/SIP HD-PT

Fastener for installing Xci Ply and NB products into 12–16 gauge steel stud walls. SIP/HD-PT is a partial thread fastener for use in particular applications to prevent panel jacking.

SIP WD

Fastener for installing Xci Ply and NB products into wood studs. No pre-drilling required.

Individual product data sheets are available for all products in the system. Please refer to the Hunter Panels website for more detailed information.

For more details about this system or for assistance with specifications please contact your local Hunter Xci Sales Rep or one of our Technical Sales Representatives.

Hunter Panels • 15 Franklin St, Portland, Maine 04101
888.746.1114 • Fax 877.775.1769 • hunterpanels.com



HUNTER
CONTINUOUS INSULATION